



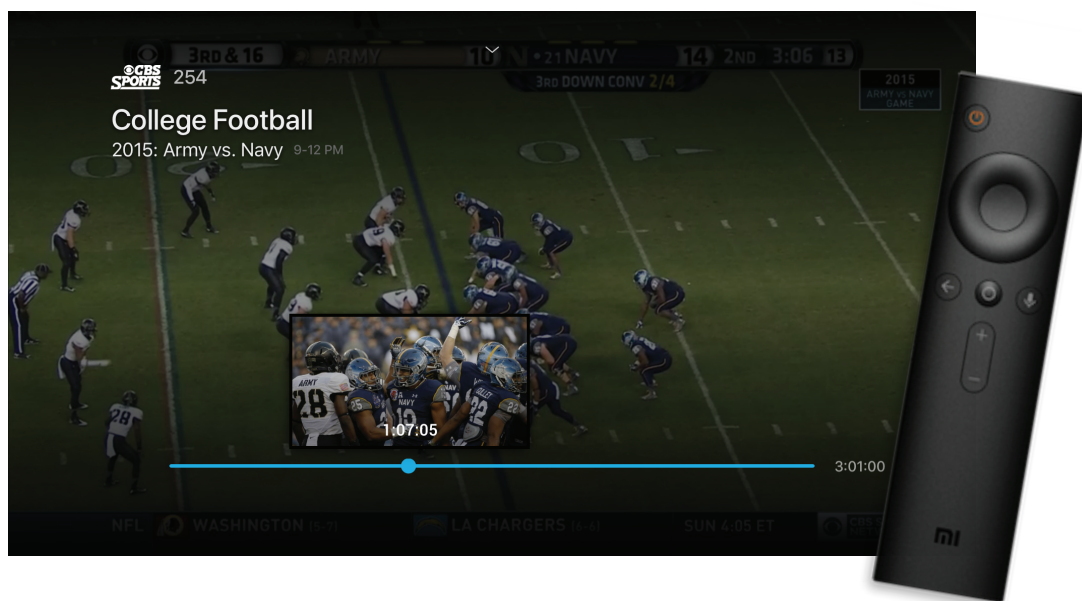
# WST Now TV

## INSTALL GUIDE - Android TV

### How to add the WST TV Now app from your device

1. You will need a gmail account. If you do not have one, create an account at [www.gmail.com](http://www.gmail.com).
2. If you are not currently a WST customer, call WST at 800-442-6835 or visit your local business office to sign up and receive your username and password.
3. Navigate to Apps.
4. Go to Get More Apps.
5. Navigate up to the search icon. Click in the box and type WST TV Now.
6. Select the WST TV Now app.
7. Install the app.
8. Once installed, launch the app from either your home screen or Apps.
9. Enter the username and password you were given from WST.

To learn more about your Android device or setup, visit [Android.com/tv](http://Android.com/tv) or call the WST Help Desk at 888-377-6523.



800 • 442 • 6835

[Wheatstate.com/TVnow](http://Wheatstate.com/TVnow)